

SHARP

Pensile e pensile a terra

/ Hung cabinet and sideboard



SHARP

Pensili verticali / Vertical hung cabinet

Contenitori pensili realizzati con struttura in MDF, con interno laccato opaco. Struttura con bordo inclinato a 45°.

Finitura esterna ed ante: laccato opaco, malta laccato opaco e malta stampata, rivestite con tessuto stampato in fibra di vetro, stampa diretta laccato lucido con finitura extra-gloss.

Finitura protettiva: opaca atossica e lucido extra-gloss. Comprensivi di ferramenta per apertura push pull e fissaggio a parete.

/ Hung cabinets made with MDF structure, with matt lacquered interior. Structure with 45 ° inclined edge.

External finish and door: matt lacquered, matt lacquered and printed mortar, covered with glass fiber printed fabric, directly printed with glossy lacquer with extra-gloss finish.

Protective finish: non-toxic opaque and extra-gloss. Hardware for push pull opening and wall fixing included.

Vista interna / Inner view

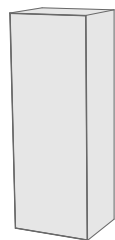
Art. BS-3P



Art. BS-5P



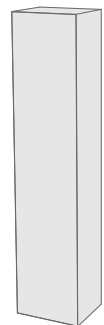
Art. BS-3P



Dimensioni / Size
(L/W x A/H x P/D)
40,8 x 110 x 33,4 cm
/ 1'4.1" x 3'7.3" x 1'1.1"

Kg 31
m³0,20

Art. BS-5P



Dimensioni / Size
(L/W x A/H x P/D)
40,8 x 165 x 33,4 cm
/ 1'4.1" x 5'4.9" x 1'1.1"

Kg 48
m³0,30

Ante / Doors	1
Finitura esterna / External finish	Stampa su Tecno Fiber / Printed Tecno Fiber
Grafica / Graphic	RX3A
Ripiani in vetro / Glass shelves	2 (art. BS-3P), 2 (art. BS-5P)
Ripiani laccati/ Laquered shelves	1 (art. BS-5P)

SHARP

Pensili orizzontali / Horizontal hung cabinet

Contenitori pensili realizzati con struttura in MDF, con interno laccato opaco. Struttura con bordo inclinato a 45°.

Finiture esterne ed ante: laccato opaco, malta laccato opaco e stampata, rivestite con tessuto stampato in fibra di vetro, stampata con laccato lucido con finitura extra-gloss.

Finitura protettiva: opaca atossica e lucido extra-gloss. Comprensivi di ferramenta per apertura push pull e fissaggio a parete.

/ Hung cabinets made with MDF structure, with matt lacquered interior. Structure with 45 ° inclined edge.

External finish and door: matt lacquered, matt lacquered and printed mortar, covered with glass fiber printed fabric, directly printed with glossy lacquer with extra-gloss finish.

Protective finish: non-toxic opaque and extra-gloss. Hardware for push pull opening and wall fixing included.

Vista interna / Inner view

Art. BS-6P



Apertura basso / Low opening



Apertura alto / High opening

Art. BS-7P

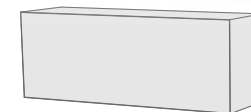


Apertura basso / Low opening



Apertura alto / High opening

Art. BS-6P



Dimensioni / Size (L/W x A/H x P/D)
110 x 40,8 x 33,4 cm / 5'4.9" x 1'4.1" x 1'1.1"

Kg 33
m³0,20

Art. BS-7P



Dimensioni / Size (L/W x A/H x P/D)
165 x 40,8 x 33,4 cm / 5'4.9" x 1'4.1" x 1'1.1"

Kg 48
m³0,30

Ante / Doors	1
Finitura esterna / External finish	Malta stampata / Printed mortar
Grafica / Graphic	RX4A
Ripiani in vetro/ Glass shelves	2 (art. BS-6P), 2 (art. BS-7P)

SHARP

Madia orizzontale a terra / Horizontal sideboard on floor

Contenitori pensili realizzati con struttura in MDF, con interno laccato opaco. Struttura con bordo inclinato a 45°.

Finitura esterna ed anta: laccato opaco, malta laccato opaco e malta stampata, rivestita con tessuto stampato in fibra di vetro, stampa diretta laccato lucido con finitura extra-gloss.

Finitura protettiva: resina opaca atossica e lucido extra-gloss. Comprensivi di ferramenta per apertura push pull e fissaggio a parete.

/ Hung cabinets made with MDF structure, with matt lacquered interior. Structure with 45 ° inclined edge.

External finish and door: matt lacquered, matt lacquered and printed mortar, covered with glass fiber printed fabric, directly printed with glossy lacquer with extra-gloss finish.

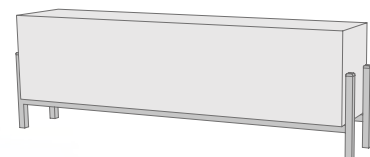
Protective finish: non-toxic opaque resin and extra-gloss. Hardware for push pull opening and wall fixing included.

Vista interna / Inner view

Art. BS-7P + PH-4M



Art. BS-7P + PH-4M



Dimensioni / Size (L/W x A/H x P/D)
165 x 56,8 x 33,4 cm / 5'4.9" x 1'10.3" x 1'1.1"

Kg 56
m³ 0,48

Ante / Doors	1
Basamento / Basement	PH-4M
Finitura esterna / External finish	Stampa su Tecno Fiber / Printed Tecno Fiber
Grafica / Graphic	RX4A
Ripiani in vetro / Glass shelves	2

SHARP

Madia orizzontale a terra / Horizontal sideboard on floor

Contenitori pensili realizzati con struttura in MDF, con interno laccato opaco. Struttura con bordo inclinato a 45°.

Finitura esterna ed anta: laccato opaco, malta laccato opaco e malta stampata, rivestita con tessuto stampato in fibra di vetro, stampa diretta laccato lucido con finitura extra-gloss.

Finitura protettiva: resina opaca atossica e lucido extra-gloss. Comprensivi di ferramenta per apertura push pull e fissaggio a parete.

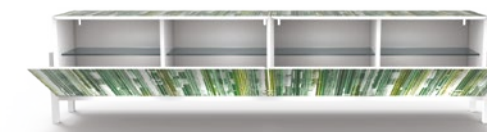
/ Hung cabinets made with MDF structure, with matt lacquered interior. Structure with 45 ° inclined edge.

External finish and door: matt lacquered, matt lacquered and printed mortar, covered with glass fiber printed fabric, directly printed with glossy lacquer with extra-gloss finish.

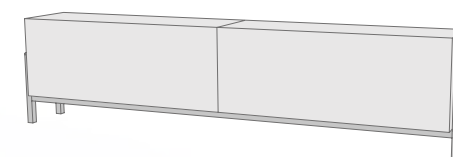
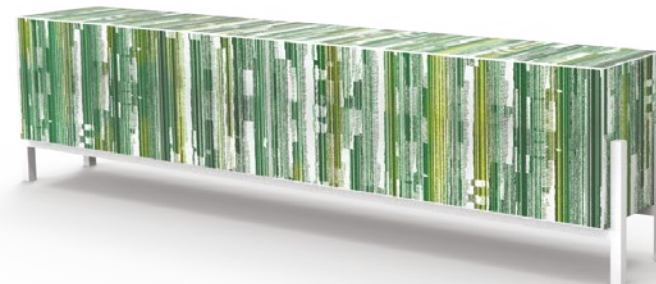
Protective finish: non-toxic opaque resin and extra-gloss. Hardware for push pull opening and wall fixing included.

Vista interna / Inner view

Art. BS-6P + BS-6P + PH-5M



Art. BS-6P + BS-6P + PH-5M



Dimensioni / Size (L/W x A/H x P/D)
220 x 56,8x 33,4 cm / 7'2.5" x 1'10.3" x 1'1.1"

Kg 77
m³ 0,53

Ante / Doors	2
Basamento / Basement	PH-5M
Finitura esterna / External finish	Stampa su Tecno Fiber / Printed Tecno Fiber
Grafica / Graphic	TF4A
Ripiani in vetro / Glass shelves	4

GRAFICHE

La Capsule Collection nasce da una ricerca attenta e approfondita delle tendenze stilistiche del momento e racchiude le 16 grafiche, divise in 4 collezioni principali (Vision Superb, Eros e Psiche, Tecno Folk e Rx Nuance), ognuna declinata in 3 varianti colore.

/ The Capsule Collection was born from careful and in-depth research of the stylistic trends and contains 16 graphics, divided into 4 main collections (Vision Superb, Eros e Psiche, Tecno Folk e Rx Nuance), each declined in 3 color variant.

VISION SUPERB



EROS E PSICHE



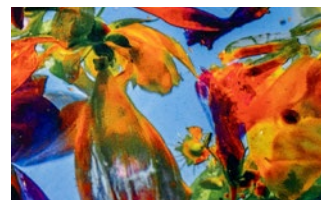
RX NUANCE



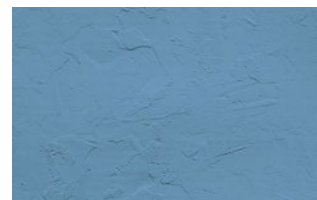
TECHNO FOLK



FINITURE SUPERFICIALI / SURFACE FINISHES



Stampa digitale opaca
/ Digital matt print



Malta laccata
/ Laquered mortar



Malta stampata
/ Printed mortar

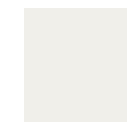


Stampa digitale lucida
/ Digital glossy print



Stampa digitale su Tecno Fiber
/ Digital print on Tecno Fiber

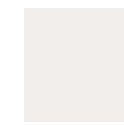
FINITURE CROMATICHE / CHROMATIC FINISHES



Bianco
White



Bianco perla
Pearl white



Ghiaccio
Ice



Grigio seta
Silk gray



Grigio argento
Silver gray



Grigio ferro
Iron gray



Grigio grafite
Graphite gray



Nero
Black



Biscotto
Biscuit



Cappuccino
Cappuccino



Tortora
Turtledove



Argilla
Clay



Muschio
Musk



Blu pastello
Pastel blue



Blu zaffiro
Zapphire blue



Mostarda
Mustard



Arancio puro
Pure orange



Rosso rubino
Ruby red



Verde pallido
Pale green



Verde erba
Green grass

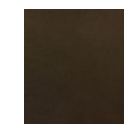
LACCATURE OPACHE



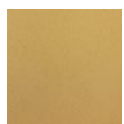
Bianco
White



Nero
Black



Bronzo
Bronze



Ottone
Brass

LACCATURE METALLICHE